



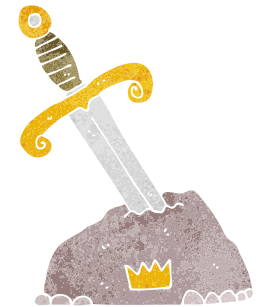
Arthur and the Golden Rope

What is a Myth or Legend?

A myth is a traditional story, often involving supernatural beings or forces, that explains a natural or social phenomenon. Legends are similar but typically focus on historical events or figures embellished over time.

Example:

- **Myth:** The story of King Arthur and his magical sword Excalibur.
- **Legend:** The tale of Robin Hood, who stole from the rich to give to the poor.



Story Openings

Example Openings for a Mythical Story:

1. *In a time long forgotten, when magic danced on the wind and dragons soared through the skies, a young boy named Arthur discovered a mysterious golden rope...*
2. *Deep in the heart of an ancient forest, where shadows whispered secrets to the moon, a legendary hero was about to embark on an extraordinary adventure...*

Example of Mythical Characters

- **Arthur:** The brave and noble king destined for greatness.
- **Merlin:** The wise wizard who guides Arthur with his wisdom and magical abilities.
- **Morgana:** A powerful sorceress who often stands in opposition to Arthur.



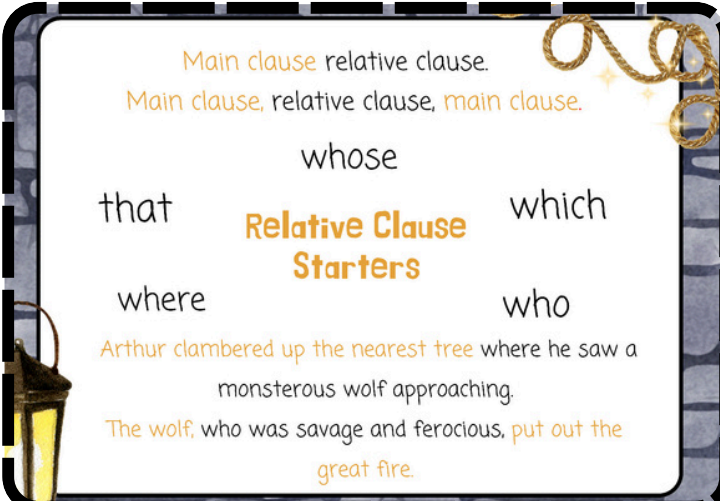
Examples of Magical Objects

- **Excalibur:** King Arthur's legendary sword, often associated with rightful sovereignty.
- **The Golden Rope:** A magical item that grants the user extraordinary abilities or connection.
- **The Holy Grail:** A mythical chalice that represents ultimate achievement and purity.

Main clause relative clause.
Main clause, relative clause, main clause.

whose
that **Relative Clause Starters** which
where who

Arthur clambered up the nearest tree where he saw a monstrous wolf approaching.
The wolf, who was savage and ferocious, put out the great fire.



Rules of Speech

Tips for Writing Dialogue:

1. Start a new line for each speaker:

- "I will find the golden rope," said Arthur.
- "Wait! You're not ready," replied Merlin.

2. Punctuation for direct speech:

- Use commas to separate the speech from the reporting clause: "I can help you," said the wizard.
- Use quotation marks to indicate the beginning and end of spoken words: "Beware of the dangers ahead!"



Expanded Noun Phrases

Definition:

An expanded noun phrase uses adjectives or additional details to give more information about a noun. It can help to create a vivid image in the reader's mind.

Example:

- Simple noun phrase: The dog.
- Expanded noun phrase: The large, fluffy, golden retriever with a wagging tail.

Explanation of Tense

Tense Overview:

Tenses indicate the time of action. The main tenses are:

1. **Present Tense:** Describes actions happening now.
 - Example: Arthur discovers the golden rope.
2. **Past Tense:** Describes actions that have already happened.
 - Example: Arthur discovered the golden rope last week.
3. **Future Tense:** Describes actions that will happen.
 - Example: Arthur will discover the golden rope tomorrow.



Key Vocabulary

elements



endurance

attached



interrupt

mighty

meddler

fruitful

category

lightening

bounded

fjord

valiant

committee

stomach

marvellous

gravely

warrior

ravines

definite

symbol

mischievous

ravaged

cauldron

molten

exaggerate

twelfth

privilege

realms

talon

embers

excellent

yacht

relevant

peril

townsfolk

foreign

rhythm

